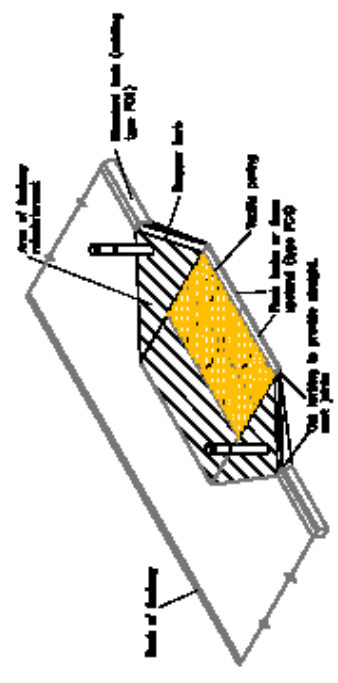


- NOTES:**
1. THE CONTRACTOR TO BE RESPONSIBLE FOR OBTAINING ALL NECESSARY PERMITS.
  2. ALL WORK TO BE COMPLETED WITHIN THE SPECIFIED TIME FRAME.
  3. ALL MATERIALS TO BE OF THE HIGHEST QUALITY AVAILABLE.
  4. THE CONTRACTOR TO BE RESPONSIBLE FOR OBTAINING ALL NECESSARY PERMITS.

**LEGEND:**

- PROPOSED CONSTRUCTION (Hatched pattern)
- EXISTING CONSTRUCTION (Dotted pattern)
- PROPOSED TYPE 1 PAVEMENT CONSTRUCTION (Diagonal lines)
- PROPOSED TYPE 2 PAVEMENT CONSTRUCTION (Horizontal lines)
- PROPOSED TYPE 3 PAVEMENT CONSTRUCTION (Vertical lines)
- PROPOSED TYPE 4 PAVEMENT CONSTRUCTION (Cross-hatch pattern)
- PROPOSED TYPE 5 PAVEMENT CONSTRUCTION (Stippled pattern)
- PROPOSED TYPE 6 PAVEMENT CONSTRUCTION (Diagonal lines, opposite direction)
- PROPOSED TYPE 7 PAVEMENT CONSTRUCTION (Horizontal lines, opposite direction)
- PROPOSED TYPE 8 PAVEMENT CONSTRUCTION (Vertical lines, opposite direction)
- PROPOSED TYPE 9 PAVEMENT CONSTRUCTION (Cross-hatch pattern, opposite direction)
- PROPOSED TYPE 10 PAVEMENT CONSTRUCTION (Stippled pattern, opposite direction)
- PROPOSED TYPE 11 PAVEMENT CONSTRUCTION (Diagonal lines, opposite direction)
- PROPOSED TYPE 12 PAVEMENT CONSTRUCTION (Horizontal lines, opposite direction)
- PROPOSED TYPE 13 PAVEMENT CONSTRUCTION (Vertical lines, opposite direction)
- PROPOSED TYPE 14 PAVEMENT CONSTRUCTION (Cross-hatch pattern, opposite direction)
- PROPOSED TYPE 15 PAVEMENT CONSTRUCTION (Stippled pattern, opposite direction)
- PROPOSED TYPE 16 PAVEMENT CONSTRUCTION (Diagonal lines, opposite direction)
- PROPOSED TYPE 17 PAVEMENT CONSTRUCTION (Horizontal lines, opposite direction)
- PROPOSED TYPE 18 PAVEMENT CONSTRUCTION (Vertical lines, opposite direction)
- PROPOSED TYPE 19 PAVEMENT CONSTRUCTION (Cross-hatch pattern, opposite direction)
- PROPOSED TYPE 20 PAVEMENT CONSTRUCTION (Stippled pattern, opposite direction)



INSET (NTS)

SHANNELL LANE

HAMPSHIRE COUNTY COUNCIL  
PROPERTY BUSINESS AND REGULATORY  
ESTATES PRACTICE



SHEPHERDS SPRING SCHOOL  
ANNEX  
NOV 2007  
502727/001

